



Steam sterilizers for medicine SHS



Benefit from our many years of experience in manufacturing, sales, service and state-of-the-art equipment technology so that you can concentrate on your core tasks.



SHS

WELCOME

With more than 45 years of experience in the field of medical and laboratory technology, the second generation of SCHLUMBOHM Medizin-Labor-Technologie GmbH is already successfully meeting the demanding requirements of the market. As early as 2014, company founder Hans-Joachim Schlumbohm retired from day-to-day operations and handed over the management to his son Tobias Schlumbohm. As before, Schlumbohm Senior is responsible for research and development in the company.

As a manufacturer of steam sterilizers, washer disinfectors, care combinations, stainless steel furniture and systems for the treatment of medical waste, we supply hospitals and laboratories worldwide with our medical and laboratory technology. A total of more than 120 highly qualified employees work at our production sites in Germany and Italy.

The correct determination of requirements and the preparation of planning proposals are an absolute must. Professional project support right up to installation and commissioning is just as much a part of this as customer service, which follows on seamlessly. With our solutions you not only get technically mature systems, but also the assurance that you have a professional partner who takes care of your smooth functional processes.



An important key to our long-term success and acceptance in the market is ensuring quality, operational reliability and functionality in day-to-day operation and to harmonise these features with economic aspects.

In this context, for example, a team of over 20 service technicians is available to you 365 days a year, 24 hours a day, with an immediate service throughout Europe. The acceptance of orders as well as the scheduling of all employees working in the field is done centrally from Hamburg.

Tobias Schlumbohm
Geschäftsführer

Hans-Joachim Schlumbohm
Gesellschafter

SHS PRODUCT INFORMATION

02

WELCOME

04

STEAM STERILIZERS

06

TECHNICAL SPECIFICATIONS

08

PRODUCT OVERVIEW

09

ACCESSORIES

10

RANGE OF SERVICES

11

RANGE OF SERVICES

12

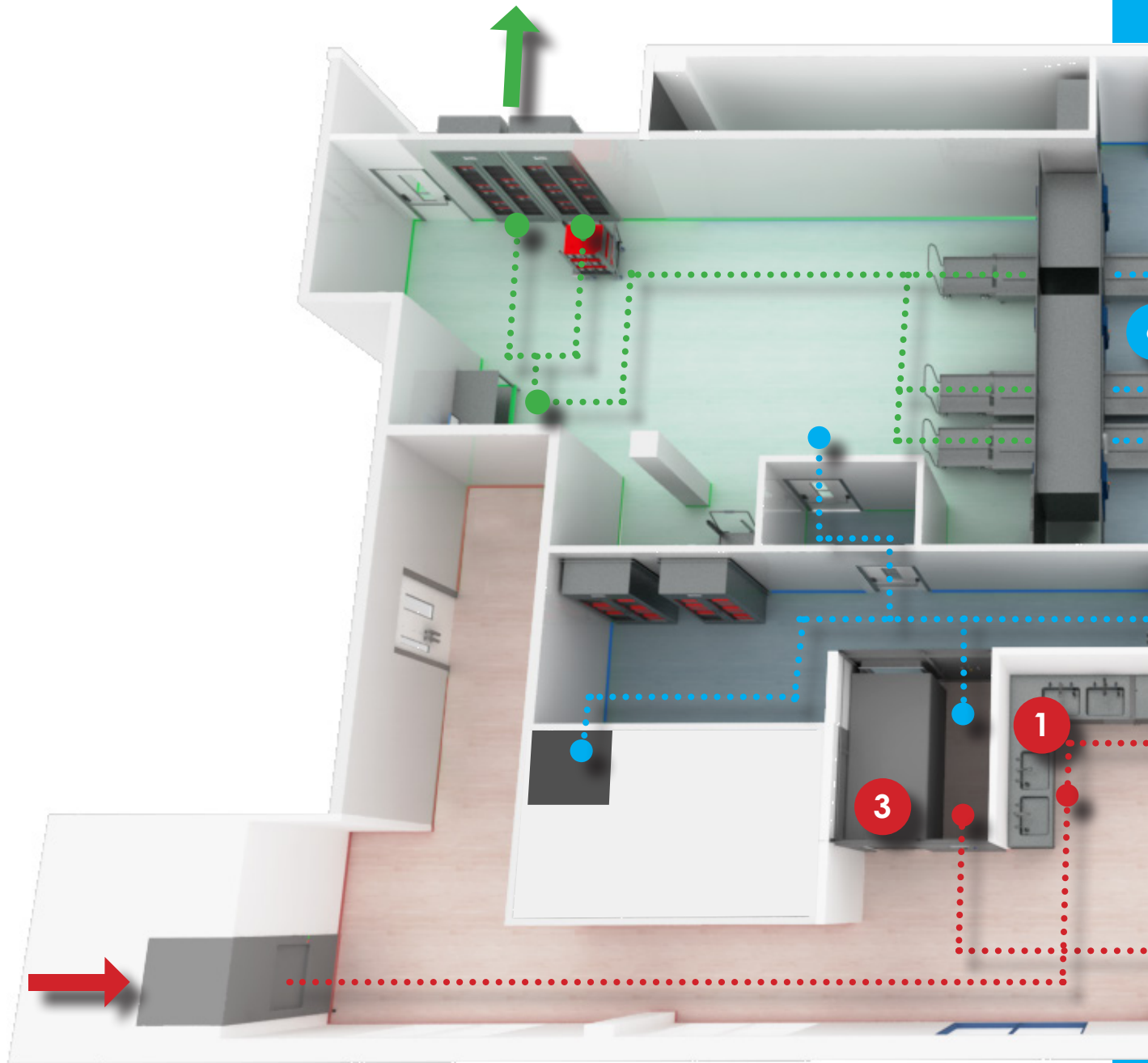
SERVICE + CONTACT



INNOVATIVE NEW PRODUCTS PRESENTED IN BRIEF
THE NEW GENERATION OF OUR FULLY AUTOMATIC
STEAM STERILIZERS

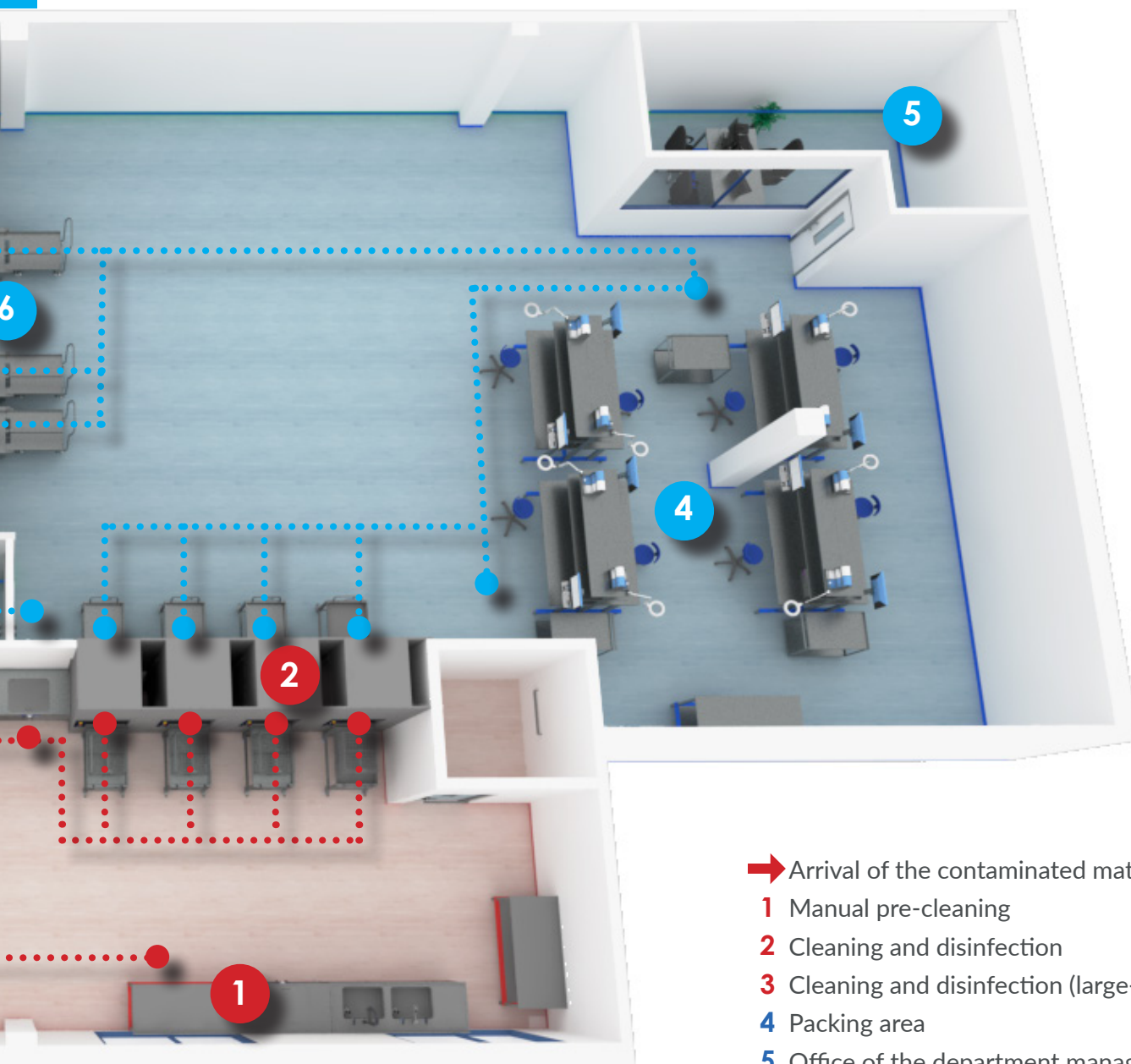
SCHLUMBOHM Steam Sterilizers

The new generation of fully automatic SCHLUMBOHM steam sterilizers of the SHS series are the result of state-of-the-art development work and proven, mature device technology for daily use in the medical sector. User-friendliness as well as energy and resource-saving technology were just as much a priority in the future-oriented development as optimum accessibility for maintenance and service.



The SCHLUMBOHM steam sterilizers comply with DIN EN 285 and are suitable for the preparation of solid and porous goods as well as hollow bodies in the appropriate packaging. The devices are CE marked according to Directive 93/42 EEC, tested and approved by a notified body.

Equipped with high-quality, commercially available components, our sterilizers combine a high degree of operational safety with innovative technologies to reduce operating costs. The devices meet all the requirements of a market in which maximum safety, absolute reliability and reproducible treatment processes are indispensable.



- ➔ Arrival of the contaminated material
- 1 Manual pre-cleaning
- 2 Cleaning and disinfection
- 3 Cleaning and disinfection (large-capacity)
- 4 Packing area
- 5 Office of the department management
- 6 Sterilisation
- ➔ Output of the sterilised material

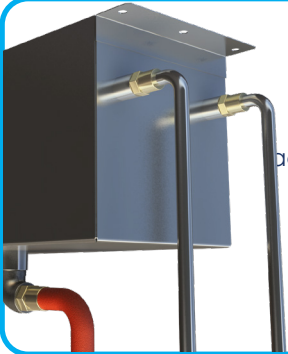
Technical Specifications



- Air Check -
To deactivate inert gases, the steam quality is checked.



Programmable SIEMENS PLC for redundant safety in all operating phases.



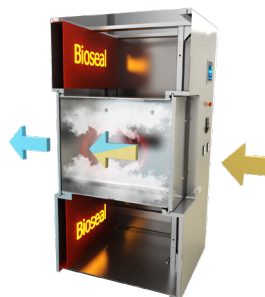
- Water saving system -
The replenishment of cold water is carried out according to demand and disconnected from the mains for the respective programme phases.



All pipework is made of AISI 316L stainless steel using TIG orbital welding. All connections optionally in Tri-Clamp design.



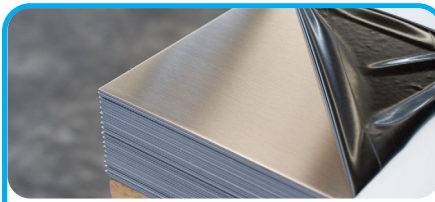
- Waste water cooling -
Process water and condensate are brought together in a collecting tank, from where they are thermostatically regulated and fed into the floor drain.



- Bioseal -
Optional airtight partitioning of the loading and unloading area.



Guaranteed operational reliability through high-quality components. High availability of spare parts due to commercially available makes of component parts



Frame structure and cladding in AISI 304 stainless steel.



Chamber, steam jacket and chamber doors optionally in stainless steel AISI 316L or AISI316TI. Chamber and doors with electro-polished surface.



17-inch touch screen display on loading and unloading side, resolution 1280 x 1024



- Automatic Bowie & Dick Test - Reliable, cost-effective monitoring and documentation of values and results without external aids.



Claw vacuum pump (dry vacuum) - 95% water saving compared to conventional systems (200l per batch). Only 30 min. programme time with full load including drying.



Steam supply optionally via electric steam generator (stainless steel AISI 316L), pure steam or heating steam/pure steam heat exchanger. Optional combination of steam supply and steam management possible.

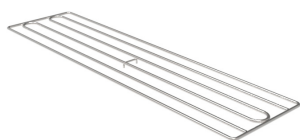
Series	Model	Liters	SIE	Chamber dimensions (WxHxD)	Outer dimensions (WxHxD)
1.1VD	SHS.1.1.1VD.E/S/SE/HE/EHE	76	1	330 x 330 x 695	650 x 1700 x 890
1.2VD	SHS.1.1.2VD.E/S/SE/HE/EHE				650 x 1700 x 910
1.1VD	SHS.1.1.5.1VD.E/S/SE/HE/EHE	108	1.5	330 x 330 x 995	650 x 1700 x 1190
1.2VD	SHS.1.1.5.2VD.E/S/SE/HE/EHE				650 x 1700 x 1210
2.1VD	SHS.2.2.1VD.E/S/SE/HE/EHE	156	2	330 x 680 x 695	970 x 1870 x 895
2.2VD	SHS.2.2.2VD.E/S/SE/HE/EHE				970 x 1870 x 915
2.1VD	SHS.2.3.1VD.E/E/S/SE/HE/EHE	223	3	330 x 680 x 995	970 x 1870 x 1195
2.2VD	SHS.2.3.2VD.E/E/S/SE/HE/EHE				970 x 1870 x 1215
3.1VD	SHS.3.1.1VD.E/E/S/SE/HE/EHE	210	1 ISO	460 x 460 x 995	1020 x 1870 x 1195
3.2VD	SHS.3.1.2VD.E/E/S/SE/HE/EHE				1020 x 1870 x 1215
3.1VD	SHS.3.2.1VD.E/E/S/SE/HE/EHE	217	2 ISO	460 x 680 x 695	1020 x 1870 x 895
3.2VD	SHS.3.2.2VD.E/E/S/SE/HE/EHE				1020 x 1870 x 915
3.1VD	SHS.3.3.1VD.E/E/S/SE/HE/EHE	274	3 ISO	460 x 460 x 1295	1020 x 1870 x 1495
3.2VD	SHS.3.3.2VD.E/E/S/SE/HE/EHE				1020 x 1870 x 1515
4.1VD	SHS.4.4.1VD.E/E/S/SE/HE/EHE	312	4	660 x 680 x 695	1400 x 1870 x 975
4.2VD	SHS.4.4.2VD.E/E/S/SE/HE/EHE				1400 x 1870 x 995
4.1VD	SHS.4.6.1VD.E/E/S/SE/HE/EHE	446	6	660 x 680 x 995	1400 x 1870 x 1275
4.2VD	SHS.4.6.2VD.E/E/S/SE/HE/EHE				1400 x 1870 x 1295
4.1VD	SHS.4.8.1VD.E/E/S/SE/HE/EHE	581	8	660 x 680 x 1295	1400 x 1870 x 1575
4.2VD	SHS.4.8.2VD.E/E/S/SE/HE/EHE				1400 x 1870 x 1595
4.1VD	SHS.4.10.1VD.E/E/S/SE/HE/EHE	715	10	660 x 680 x 1595	1400 x 1870 x 1875
4.2VD	SHS.4.10.2VD.E/E/S/SE/HE/EHE				1400 x 1870 x 1895
4.1VD	SHS.4.12.1VD.E/E/S/SE/HE/EHE	895	12	660 x 680 x 1995	1400 x 1870 x 2275
4.2VD	SHS.4.12.2VD.E/E/S/SE/HE/EHE				1400 x 1870 x 2295

HD Series: Horizontal door guide

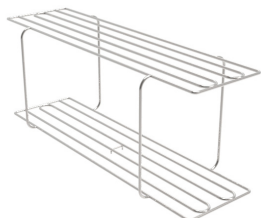
Series	Model	Liters	SIE	Chamber dimensions (WxHxD)	Outer dimensions (WxHxD)
4.1HD	SHS 4.4.1HD.E/S/SE/HE/EHE	312	4	660 x 680 x 695	1690 x 1870 x 925
4.2HD	SHS 4.4.2HD.E/S/SE/HE/EHE				1690 x 1870 x 945
4.1HD	SHS 4.6.1HD.E/S/SE/HE/EHE	446	6	660 x 680 x 995	1690 x 1870 x 1225
4.2HD	SHS 4.6.2HD.E/S/SE/HE/EHE				1690 x 1870 x 1245
4.1HD	SHS 4.8.1HD.E/S/SE/HE/EHE	581	8	660 x 680 x 1295	1690 x 1870 x 1525
4.2HD	SHS 4.8.2HD.E/S/SE/HE/EHE				1690 x 1870 x 1545
4.1HD	SHS 4.10.1HD.E/S/SE/HE/EHE	715	10	660 x 680 x 1595	1690 x 1870 x 1825
4.2HD	SHS 4.10.2HD.E/S/SE/HE/EHE				1690 x 1870 x 1845
4.1HD	SHS 4.12.1HD.E/S/SE/HE/EHE	895	12	660 x 680 x 1995	1690 x 1870 x 2225
4.2HD	SHS 4.12.2HD.E/S/SE/HE/EHE				1690 x 1870 x 2245
6.1HD	SHS 6.6.1HD.E/S/SE/HE/EHE	482	6	660 x 1050 x 695	1690 x 1870 x 925
6.2HD	SHS 6.6.2HD.E/S/SE/HE/EHE				1690 x 1870 x 945
6.1HD	SHS 6.9.1HD.E/S/SE/HE/EHE	689	9	660 x 1050 x 995	1690 x 1870 x 1225
6.2HD	SHS 6.9.2HD.E/S/SE/HE/EHE				1690 x 1870 x 1245
6.1HD	SHS 6.12.1HD.E/S/SE/HE/EHE	897	12	660 x 1050 x 1295	1690 x 1870 x 1525
6.2HD	SHS 6.12.2HD.E/S/SE/HE/EHE				1690 x 1870 x 1545
6.1HD	SHS 6.15.1HD.E/S/SE/HE/EHE	1105	15	660 x 1050 x 1595	1690 x 1870 x 1825
6.2HD	SHS 6.15.2HD.E/S/SE/HE/EHE				1690 x 1870 x 1845
6.1HD	SHS 6.18.1HD.E/S/SE/HE/EHE	1382	18	660 x 1050 x 1995	1690 x 1870 x 2225
6.2HD	SHS 6.18.2HD.E/S/SE/HE/EHE				1690 x 1870 x 2245
8.1HD	SHS 8.8.1HD.E/S/SE/HE/EHE	619	8	660 x 1350 x 695	1690 x 2100 x 925
8.2HD	SHS 8.8.2HD.E/S/SE/HE/EHE				1690 x 2100 x 945
8.1HD	SHS 8.12.1HD.E/S/SE/HE/EHE	883	12	660 x 1350 x 995	1690 x 2100 x 1225
8.2HD	SHS 8.12.2HD.E/S/SE/HE/EHE				1690 x 2100 x 1245
8.1HD	SHS 8.16.1HD.E/S/SE/HE/EHE	1154	16	660 x 1350 x 1295	1690 x 2100 x 1525
8.2HD	SHS 8.16.2HD.E/S/SE/HE/EHE				1690 x 2100 x 1545
8.1HD	SHS 8.28.1HD.E/S/SE/HE/EHE	1956	28	660 x 1350 x 2195	1690 x 2100 x 2425
8.2HD	SHS 8.28.2HD.E/S/SE/HE/EHE				1690 x 2100 x 2445
12.1HD	SHS 12.30.1HD.E/S/SE/HE/EHE	2282	30	1060x1350x1595	2490 x 2100 x 1825
12.2HD	SHS 12.30.2HD.E/S/SE/HE/EHE				2490 x 2100 x 1845
12.1HD	SHS 12.36.1HD.E/S/SE/HE/EHE	2855	36	1060x1350x1995	2490 x 2100 x 2225
12.2HD	SHS 12.36.2HD.E/S/SE/HE/EHE				2490 x 2100 x 2245
12.1HD	SHS 12.48.1HD.E/S/SE/HE/EHE	3570	48	1060x1350x2495	2490 x 2100 x 2725
12.2HD	SHS 12.48.2HD.E/S/SE/HE/EHE				2490 x 2100 x 2745

Steam supply variants: E: Electric steam generator, S: Pure steam, according to DIN EN 285-Annex B, ES: Pure steam, switchable to electric steam generator, HE: Heating steam/pure steam heat exchanger. In addition to the standard models, customer-specific chamber sizes and dimensions can of course also be implemented. The device dimensions may vary depending on the equipment.

Accessories



Insert frame
Series 1-2-3



Insert frame with 2 levels
Series 1-2-3



Loading trolley
Series 2-3-4



Loading trolley
Series 6



Loading trolley
Series 8



Loading trolley
Series 12



Transport/Loading trolley
Series 6-8-12



Transport trolley, fixed height
Series 2-3-4



Transport trolley, variable height
Series 2-3-4



Transport trolley, fixed height
Series 4-6-8-12



Transport trolley, variable height
Series 4-6-8-12



Automat. Loading and
unloading conveyor
Series 2-3-4



Automat. Loading and
unloading conveyor
Series 2-3-4-6-8-12



Remote control



Sterilisation basket 1 StE



Sterilisation basket ISO



WASHER DISINFECTORS

SWD Series

The devices of the SWD series are the ideal washer disinfectors for the safe and efficient reprocessing of surgical instruments, MIC instruments, anaesthetic material, containers, surgical shoes and laboratory utensils. In addition to an attractive design and reduced external dimensions, innovative details to increase process reliability and DIN EN ISO 15883 were at the forefront of its development.



LARGE-CAPACITY WASHER DISINFECTORS

WDC Series

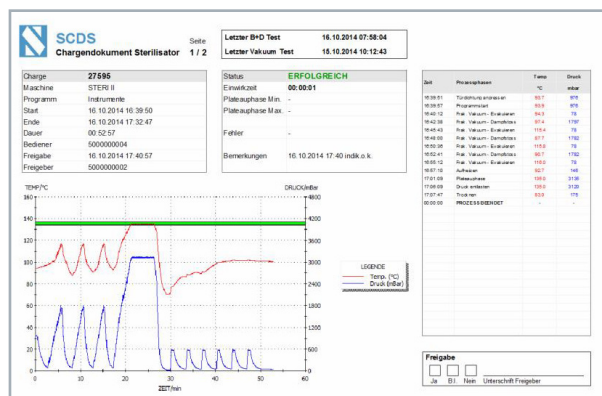
Large-capacity washer disinfectors for the reprocessing of medical devices as well as large-volume goods such as transport trolleys, containers, surgical shoes, etc. Aspects such as safety, hygiene, durability, reliability, low maintenance and resource-saving use were taken into account in the development of the large-capacity washer disinfectors. These devices guarantee a high level of operator safety with the best cleaning results.



STEAM DISINFECTION SYSTEMS

SHD Series

Large-scale disinfection systems using the VSV process for large-volume goods for infection prevention. Especially for the economical disinfection of large quantities of solid and porous goods such as mattresses and pillows. The latest generation of hi-tech solutions has been developed in terms of economy, resource conservation and ease of use. With maximum safety for the operator and best disinfection results.



Range of services

Complementary product range



OPERATIVE TECHNOLOGY

OP-TECHNOLOGY

Reliable, modern operating tables and innovative operating light systems with LED technology for safe and efficient use in outpatient and inpatient operating theatres. Thanks to intuitive operation and specific equipment variants for all surgical disciplines, our surgical technology offers the ideal partner for surgeons and nursing staff. It goes without saying that our operating tables and operating lights can be fully integrated.



CARE COMBINATIONS

AF2 Series

Bedpan washers and care combinations for fully automatic emptying, cleaning and thermal disinfection of bedpans, urine bottles and other vessels for human excreta. All requirements of the German Medical Devices Act (MPG), the Medical Devices Operator Ordinance (MPBetreibV), DIN EN 15883 Parts 1 and 3 and the Robert Koch Institute (RKI) recommendation on "Requirements for hygiene in the reprocessing of medical devices" are fully met.



STAINLESS STEEL FURNITURE

Functional furniture

Our medical functional furniture with high quality materials and workmanship is characterised by the highest hygiene standards, extensive functionality and individual adaptability. The material stainless steel no. 1.4301 is not only resistant to disinfectants, but also guarantees a long service life compared to other materials.

SEALING DEVICES



ULTRASONIC BATHS



WATER TREATMENT



... and more. Please contact our sales department. We will find the right solution for you.

Europe-wide 24-hour emergency service

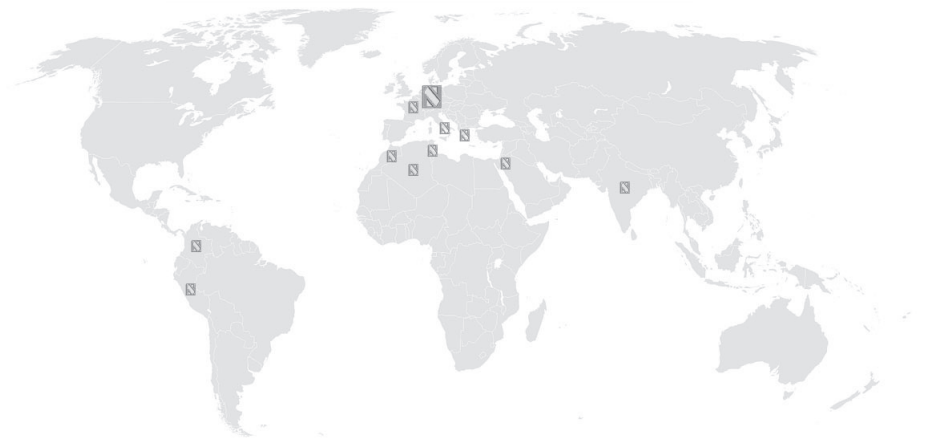
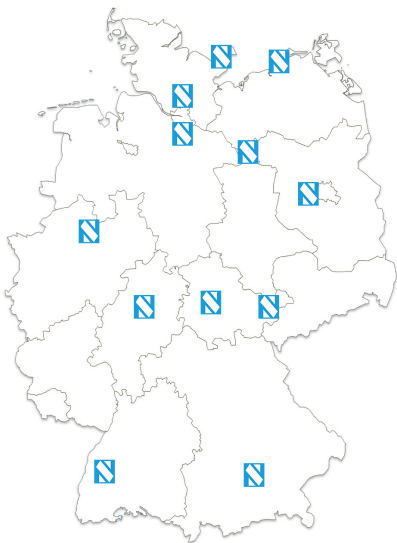
Grenzkehere 1, 21079 Hamburg, Germany
Phone: +49 (0) 40 - 76 91 50 0
Fax: +49 (0) 40 - 76 91 50 26
E-mail: info@schlumbohm-medlab.com

STAMP

24/7 emergency phone: +49 (0) 171 - 4 77 49 75

International SCHLUMBOHM support centers

Germany service centers



www.schlumbohm-medlab.de (Germany)
www.schlumbohm-medlab.com (International)



Rev. 04- 02/2020



goes green!

EN ISO 14001 CERTIFIED